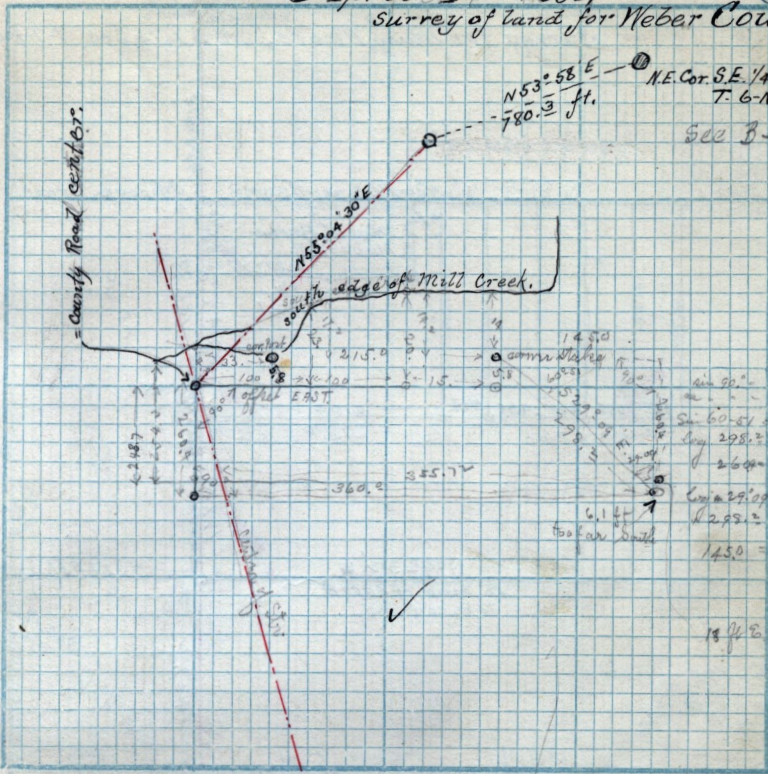


April 1st 1890

87

Survey of land for Weber County



500 B-95-

area 20°	10,000.00
area 20°	2,000.00
area 20°	9,941.87
area 20°	2,474.508
area 20°	2,415.98
area 20°	9,687.616
area 20°	2,474.508
area 20°	2,162.124

Scale: Chains per inch.

N 3° W. 8.00 ch. N 82 1/2° E 4.50 ch S 10° E 2.90 ch S 1/4 E along Slough to S.W. line of land belonging to John Staker S 11° W. 3.68 ch W. 9.46 ch to Crq. contour 5.53 a. Also Pt NW 1/4 of S.E. 1/4 Sec 25-T 6/R of said. Brq. 12.75 ch E. of N.W. 1/4 cor. sid 1/4 E. 7.25 ch S 11.00 ch S 58 1/2° W 3.97 ch S 83 1/4° W. 3.12 ch N 3° W. 13.44 ch to Crq. 8.15 a in all 13.68 the above was conveyed by Wilson Hunt to Elizabeth K. Fuller, J-540,

Copy of deed from E. K. Fuller to John Staker, Mar 16-1875- U-565- Pt E 1/2 of S.E. 1/4 & N.E. 1/4 Sec 25-T 6-N-R-2-W. Brq. 17.79 ch W. of N.E. cor. sid 1/4 S 12 1/2° E 11.40 ch N 88 1/2° W 4.60 ch N 11.00 ch E 2.21 ch to Crq. 3.75 a. also in the other 1/4 Brq. 12.75 ch E. of S.W. cor. of sid N.E. 1/4 N 3° W. 8.00 ch N 82 1/2° E 4.50 ch. S 10° E 2.90 ch S 1/4 E. along Slough to S.W. line of land belong to John Staker. S 11° W 3.68 ch W 9.46 ch to Crq. 5.53 Also Pt NW 1/4 of S.E. 1/4 said Sec. Brq. 12.75 ch E. (2)